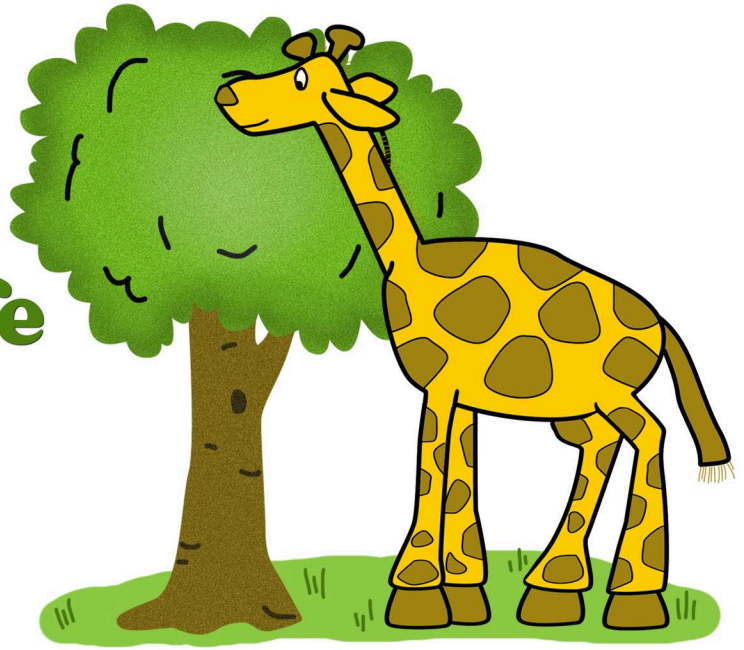


G is for Giraffe



Susan Paradis

He is tall so ve - ry tall, he's tall - er than the trees.

The first line of music is written on a grand staff (treble and bass clefs) in 4/4 time. The treble clef part has a melody of four quarter notes: G4, A4, B4, C5. The bass clef part has a bass line of four quarter notes: G2, A2, B2, C3. The lyrics are placed below the notes.

While he's up there look - ing 'round he eats some tast - y leaves.

The second line of music continues the melody and bass line from the first line. The treble clef part has a melody of four quarter notes: D5, E5, F5, G5. The bass clef part has a bass line of four quarter notes: D2, E2, F2, G2. The lyrics are placed below the notes.

Teacher Duet

The Teacher Duet section consists of a single line of music on a bass clef staff. It features a sequence of eighth notes with beams, each followed by a quarter rest. The notes are: G2, A2, B2, C3, D3, E3, F3, G3. This pattern repeats four times, followed by a final G3 note.